

# Totalizers mechanic

## Revolution counter

Display 5-digits, reset button

### U 126



U 126 - Revolution counter

#### Features

- Revolution counter
- Adding
- Display 5-digits
- Manual reset by knurled knob

#### Technical data - mechanical design

Function	Revolution counter
Display	White numbers on black
Number of digits	5-digits
Digit height	4.5 mm
Zero setting	Reset by knurled knob
Count mode	Adding in a rotational direction to be indicated, subtracting in reverse direction. 1 rev. = 1 count
Drive shaft	Right or left, $\varnothing 4$ mm
Operating speed	$\leq 2000$ rpm
Measuring range	99 999
Ambient temperature	0...+60 °C
Housing type	Surface mount housing with mounting plate
Housing colour	Grey
Dimensions W x H x L	40 x 29 x 27.5 mm
Dimensions mounting plate	60 x 29 mm
Mounting type	Base plate, 4 mounting holes
Weight approx.	90 g
Materials	Housing: Hostaform POM, grey Base plate: steel zinc-coated

# Totalizers mechanic

## Revolution counter

### Display 5-digits, reset button

U 126

#### Part number

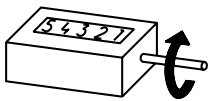
U 126.0 

	0	A		
--	---	---	--	--

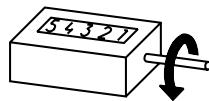
- Display / direction of rotation
  - G 5 digits 99 999 / I
  - H 5 digits 99 999 / II
- Count mode / drive
  - 01 1 revolution = 1 digit / drive shaft at right
  - 02 1 revolution = 1 digit / drive shaft at left
- Housing
  - A Surface mount housing, grey
- Zero setting
  - 1 Reset button at left
  - 2 Reset button at right

#### Direction of strokes and rotation

##### Drive on the right

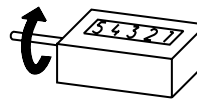


Reset button left  
Away from user  
Direction of rotation or  
stroke direction I

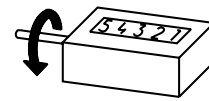


Reset button left  
Toward user  
Direction of rotation or  
stroke direction II

##### Drive on the left



Reset button right  
way from user  
Direction of rotation or  
stroke direction I



Reset button right  
Toward user  
Direction of rotation or  
stroke direction II

Reset button always opposite of drive.

#### Dimensions

