

FLDM 170G1011/S42

Copy counters - precision

Article number: 10153175

Overview

- 0 ... 90 mm
- pulsed red laser diode
- push-pull
- 4 preset levels or level set by customer
- 50 °C
- IP 54



Technical data

General data

Measuring distance Sd	0 ... 90 mm
Optimum operating distance	70 mm
Counting rate	< 3000000 Copies/h
Object speed	< 5 m/sec
Object cycle distance	> 1 mm
Sensitivity	Single sheet/edge thickness 0,1 mm
Sync. input	Yes
Measuring point	Visible red laser line 6 mm
Light source	Pulsed red laser diode
Wave length	670 nm
Laser class	2
Edge indicator	LED yellow
Power on indication	LED green
False pulse suppression	4 program options
Direct gap detection	Yes
Sensitivity adjustment	4 preset levels or level set by customer

Electrical data

Voltage supply range +Vs	10 ... 30 VDC
Current consumption max. (no load)	230 mA
Output circuit	Push-pull
Output pulse length	0,3 ... 100 ms selectable
Short circuit protection	Yes
Reverse polarity protection	Yes
Interface	Serial for ScaDiag software

Mechanical data

Width / diameter	30 mm
Type	Rectangular
Housing material	Die-cast zinc
Connector base (main connector)	DIN 45322, 6 pin
Connector base (interface)	DIN 45326, 8 pin
Front (optics)	Glass

Ambient conditions

Operating temperature	0 ... +50 °C
Protection class	IP 54

Remarks

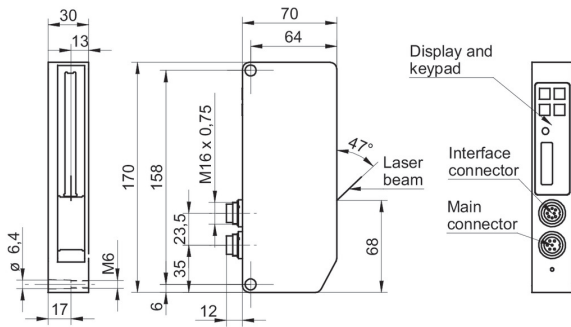
- A software package called ScaDiag allows to control all functions and settings.
- Also the software allows to record and display measurement sequences speeding up troubleshooting.

FLDM 170G1011/S42

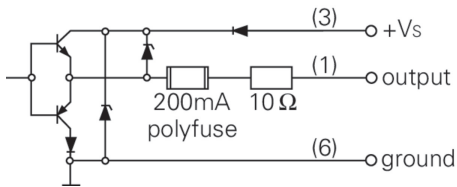
Copy counters - precision

Article number: 10153175


Dimension drawing



Connection diagram



Laser warning



LASER RADIATION
DO NOT STARE INTO BEAM
Wavelength: 640...670nm

IEC 60825-1, Ed. 3, 2014
CLASS 2 LASER PRODUCT

IEC 60825-1/2014 Complies with 21 CFR 1040.10 and 1040.11 except for conformance with IEC 60825-1 Ed. 3., as described in Laser Notice No. 56, dated May 8, 2019