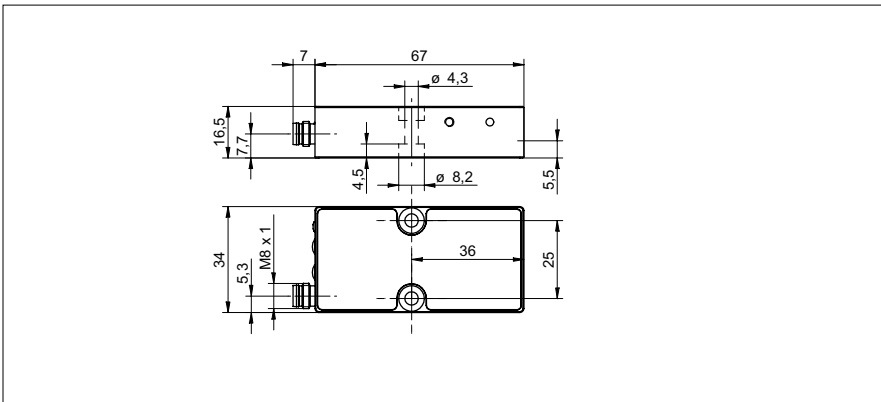


**Edge sensors**

**ZADM 034I220.0022**

**dimension drawing**



**general data**

type	measuring mode: sum of all dark areas, edges
measuring field size	22 mm
measuring range towards object	0 ... 200 mm
measuring frequency	1100 Hz
resolution	< 0,1 mm (S = 0 ... 150 mm) < 0,2 mm (S = 150 ... 200 mm)
repeat accuracy	< 0,1 mm (S = 0 ... 150 mm) < 0,2 mm (S = 150 ... 200 mm)
smallest object recognizable	3 mm
linearity error	± 1,75 mm (S = 0 ... 200 mm) ± 1 mm (S = 50 ... 150 mm)
power on indication	LED green
output indicator	LED yellow
light source	pulsed infrared diode
wave length	880 nm

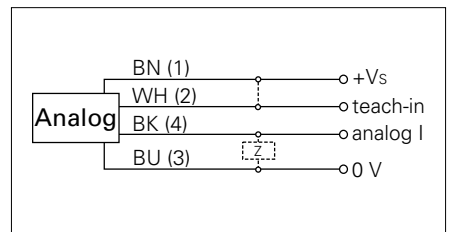
**photo**



**electrical data**

response time	< 0,9 ms
voltage supply range +Vs	12 ... 28 VDC
current consumption max. (no load)	120 mA
output circuit	analog
output signal	4 ... 20 mA
reverse polarity protection	yes, Vs to GND
short circuit protection	yes

**connection diagram**



**mechanical data**

width / diameter	34 mm
type	rectangular, front view
housing material	aluminum
front (optics)	glass
connection types	connector M8 4 pin

**ambient conditions**

operating temperature	0 ... +55 °C
protection class	IP 67

